



DATA SHEET

SPORT MATTRESSES



TECHNICAL DESCRIPTION

Padded products used for sports.

INTERIORS

Padding in open cell polyurethane foam, density 16/21 kg/mc.
Fire retardant padding available upon request, density 25/30 kg/mc.

FABRICS AND ACCESSORIES

The plastic material used to cover the mattresses is realized with DOUBLE SIDE PVC COATED FABRICS, particularly resistant to abrasion and tearing, washable, non-toxic, fire retardant class 2, phthalate-free, anti-mould, antibacterial, fungicide, waterproof.

Zippers used are particularly strong and equipped with rounded cursors.

The mattresses are equipped with double-stitched handles.

30 and 40 cm thick mattresses are equipped with vent holes and reinforced handles.

The folding mats are anchored together by means of velcro strips cm 5.

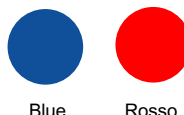
All items are available in 2 versions:

- WITHOUT anti slipping (SA),
- WITH anti slipping (CA)

Anti slipping used, grey color and very durable, provides great grip to the ground.

COLORS

The mattresses of the Sport line are supplied in the colors:



SAFETY REQUIREMENTS

Omsi srl, responsible for the design, manufacturing and packaging of the Soft products guarantees that the same are manufactured in full compliance with European regulations in terms of quality and safety.

CLEANING AND MAINTENANCE

The covering is completely removable, It is recommended to wash covering and internal padding separately.

Fabric can be rinsed out with a sponge and a degreasing product, even with a 20% alcohol solution.

The internal padding in polyurethane foam can be dusted with a compressed air jet. Do not wash.



CERTIFICATIONS

All products are certified to be fireproof CI.11M.

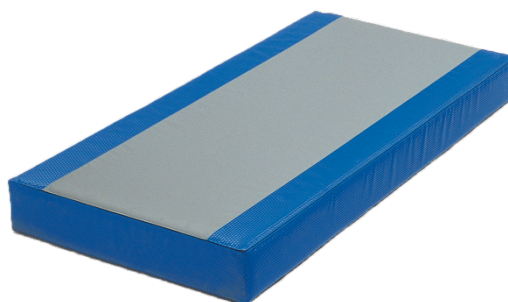
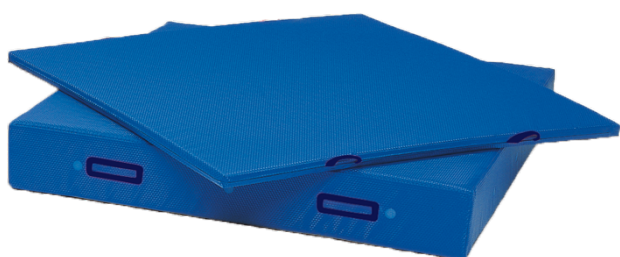
SPORT MATTRESSES



WITHOUT ANTI SLIPPING

WITH ANTI SLIPPING

Dimension cm 180x70x6	D.21	Art. OM 3.299/SA	Art. OM 3.299/CA
Dimension cm 200x100x6	D.21	Art. OM 3.301/SA	Art. OM 3.301/CA
Dimension cm 200x100x10	D.21	Art. OM 3.302/SA	Art. OM 3.302/CA
Dimension cm 200x100x20	D.16	Art. OM 3.303/SA	Art. OM 3.303/CA
Dimension cm 200x100x30	D.16	Art. OM 3.304/SA	Art. OM 3.304/CA
Dimension cm 200x100x40	D.16	Art. OM 3.305/SA	Art. OM 3.305/CA
Dimension cm 200x200x6	D.21	Art. OM 3.306/SA	Art. OM 3.306/CA
Dimension cm 200x200x10	D.21	Art. OM 3.307/SA	Art. OM 3.307/CA
Dimension cm 300x200x6	D.21	Art. OM 3.308/SA	Art. OM 3.308/CA
Dimension cm 300x200x10	D.21	Art. OM 3.309/SA	Art. OM 3.309/CA
Dimension cm 300x200x20	D.16	Art. OM 3.310/SA	Art. OM 3.310/CA
Dimension cm 300x200x30	D.16	Art. OM 3.311/SA	Art. OM 3.311/CA
Dimension cm 300x200x40	D.16	Art. OM 3.312/SA	Art. OM 3.312/CA



FOLDING MATTRESS



Dimension cm 180x70x6

D.21

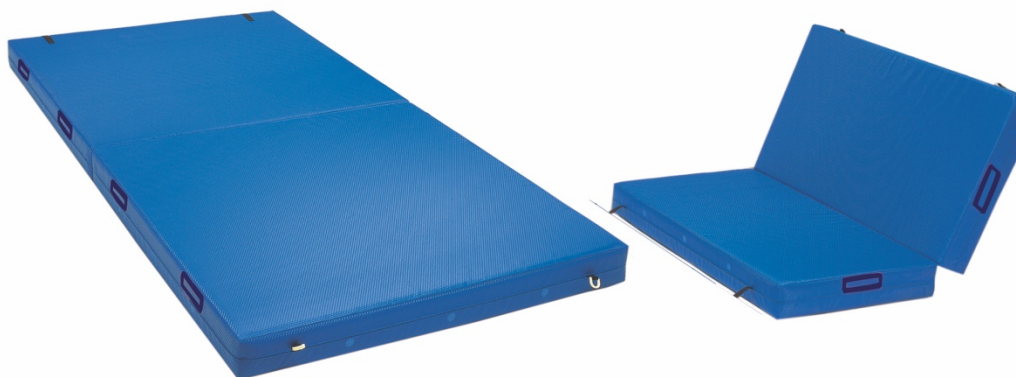
WITHOUT
ANTI SLIPPING

Art. OM 3.300/SA

WITH
ANTI SLIPPING

Art. OM 3.300/CA

FOLDING MATS



WITHOUT
ANTI SLIPPING

WITH
ANTI SLIPPING

Dimension cm 200x200x20/40

D.16 Art. OM 3.401/SA

Art. OM 3.401/CA

Dimension cm 200x200x30/60

D.16 Art. OM 3.402/SA

Art. OM 3.401/CA

Dimension cm 200x200x40/80

D.16 Art. OM 3.403/SA

Art. OM 3.401/CA

Dimension cm 400x200x20/40

D.16 Art. OM 3.404/SA

Art. OM 3.401/CA

Dimension cm 400x200x30/60

D.16 Art. OM 3.405/SA

Art. OM 3.401/CA

Dimension cm 400x200x40/80

D.16 Art. OM 3.406/SA

Art. OM 3.401/CA



Via Parini, 3 - 40069 Zola Predosa (BO) Italy
Tel. +39 051 6164311 (2 linee r.a.) - Fax +39 051 6164317
info@omsi.it - soft@omsi.it - www.omsi.it