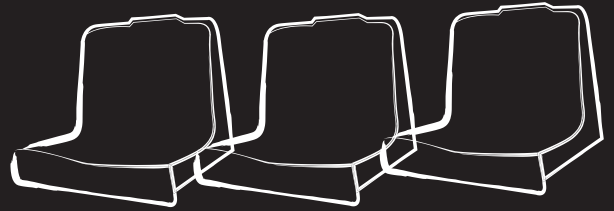


**YOMSI**



**NEW  
PRODUCT  
2024-2025**



**SPORT**

**1**

# Botticelli

In production as of  
March 2024

Botticelli is the Italian design sport seat characterized by enveloping ergonomics; it enables a correct posture and ensures a comfortable sitting position even in case of prolonged use, thanks to solid seat and back padding which provides lumbar and cervical support.

100% recyclable  
Complies with FIFA / UEFA standards

**DIMENSIONS:**

min. centre-to-centre distance 600 mm, depth 620 mm,  
seat height from 440 to 450 mm, width 600 mm,  
total height 980 mm.

**2**

# DONATELLO



In production as of  
January 2024

Armchair with an attractive design, with squared shapes. Characterized by generous volumes, ideal for being placed in the most prestigious areas of a sports facility, to enjoy the events with absolute comfort.

Supporting structure in wood.  
Finishing available in leather, imitation leather,  
velvet or fabric Trevira CS.

**DIMENSIONS:**

Depth 800 mm; width 850 mm;  
height 1070 mm



# 3

## M2025

In production as of  
April 2024

Brand new seat with high backrest MADE IN ITALY, complying to the latest FIFA recommendations which require a minimum center-to-center distance of 500 mm to provide a larger and more comfortable seat.

The peculiarity of this model is its versatility, in fact it is available in two sizes: 460 mm and 480 mm width and its depth can vary from **350 / 400 / 450** mm, making it adaptable to most existing or newly built steps

### **DIMENSIONS:**

width 460/480 mm; depth 350/400/450 mm;  
backrest height 360 mm.



# 4

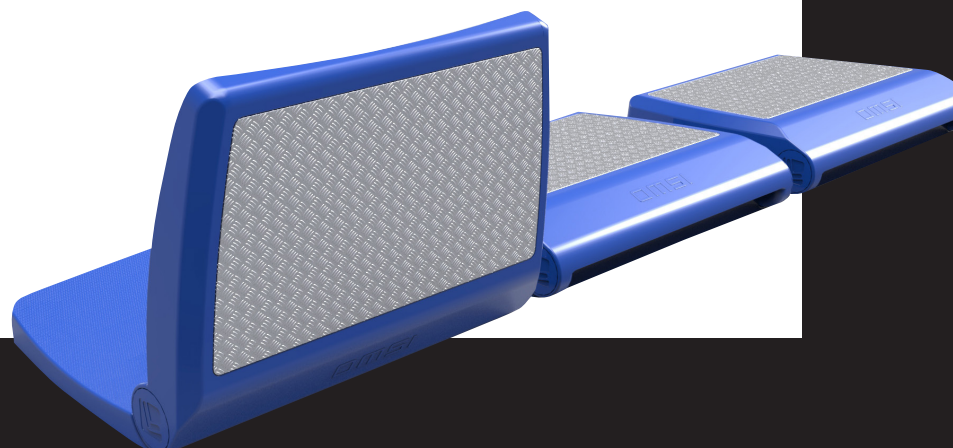
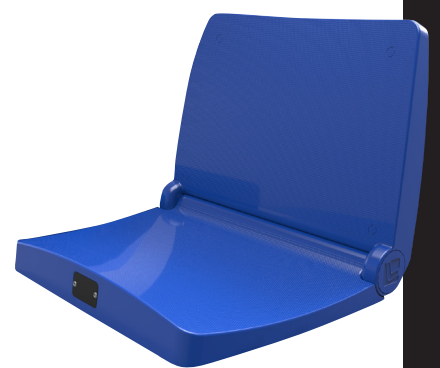
## M2024

In production as of  
March 2025

Seat for sports facilities in polypropylene with folding backrest, specially designed for retractable telescopic grandstands, it has an almond-shaped steel plate on the rear part of the backrest.

### **DIMENSIONS:**

depth 410 mm; width 440;  
height 1340 mm



**5**

## ARMREST BK-OLIMPICO

In production as of  
January 2024

New armrest with metal structure and polyurethane covering, eventually added of a padded panel for the end of the row, with the possibility of also embroidering logos or sponsors

### DIMENSIONS:

Width 45 mm  
length 220 mm

**6**

## ARMREST BK-L

**LARGE**

In production as of  
January 2024

New fixed armrest with polyamide structure and polyurethane covering.

Thanks to its enlarged dimensions it provides greater seating comfort.

The support width is 60 mm and the support length is 280 mm.

Slot for row numbering plate dimensions measuring 130x90 mm



**7**

## **BENCH WITH POLYAMIDE FOOT AND SEAT PLATE**

In production as of  
January 2024

Modular beam in FE 360 steel, it is made of a solid 60 x 40 cm thick beam treated with cathaphoresis and paint, feet and fixing plates made of anti-corrosion polyamide. Solution with great versatility of use, in fact, thanks to the possibility of cutting the beam to size, 1/2/3/4/5 places can be obtained.

**FIXING:**  
4 fixing points

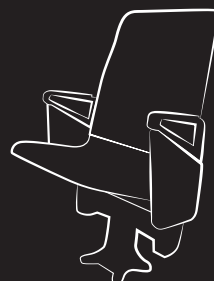
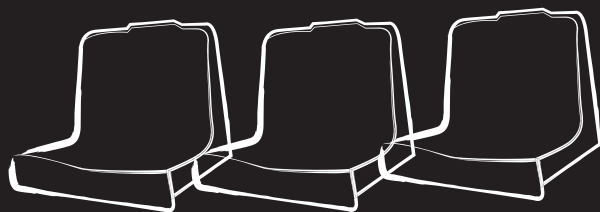
**8**

## **BEAM WITH BRACKET AND FOOT SELF-SUPPORTING**

In production as of  
January 2024

Modular sectional bench in fe 360 steel, composed of a solid 60 x 40 cm thick beam with cathaphoresis treatment and outdoor painting, self-supporting feet and anti-corrosion polyamide fixing plates. Solution with great versatility of use, in fact, thanks to the possibility of cutting the beam to size, 1/2/3/4/5 places can be obtained.





**PLEASE CONTACT  
OUR OFFICES  
FOR ANY INFO**



**OMSI**  
SEATING FOR BIG EVENTS

Via Parini, 3 - 40069 Zola Predosa (BO) Italy

Tel. +39 051 6164311 - [info@omsi.it](mailto:info@omsi.it)

[www.omsi.it](http://www.omsi.it)